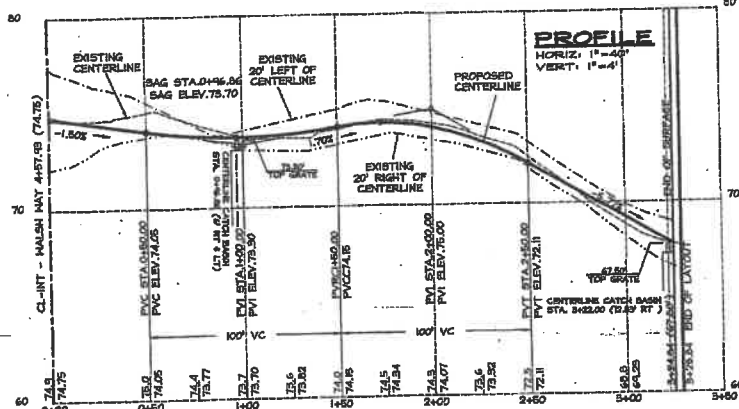
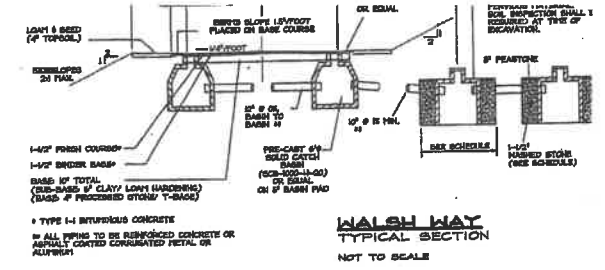
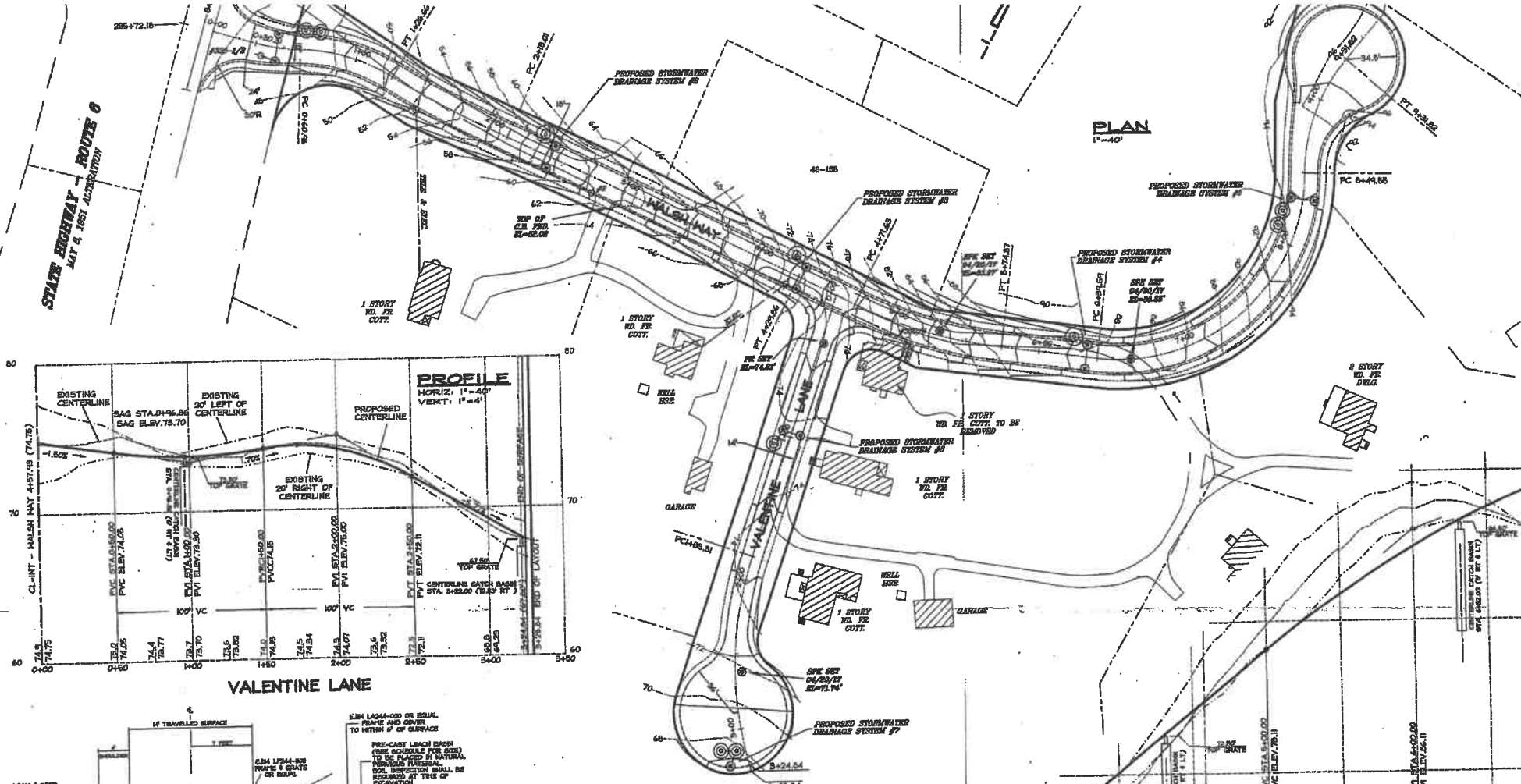
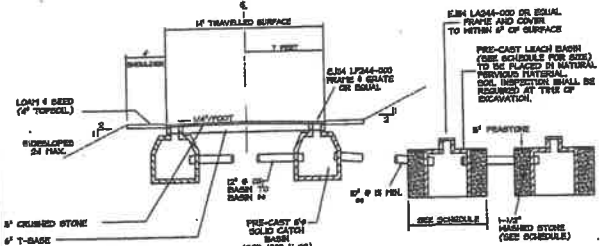


STATE HIGHWAY - ROUTE 0
MAY 8, 1952 ADJUSTMENT



VALENTINE LANE



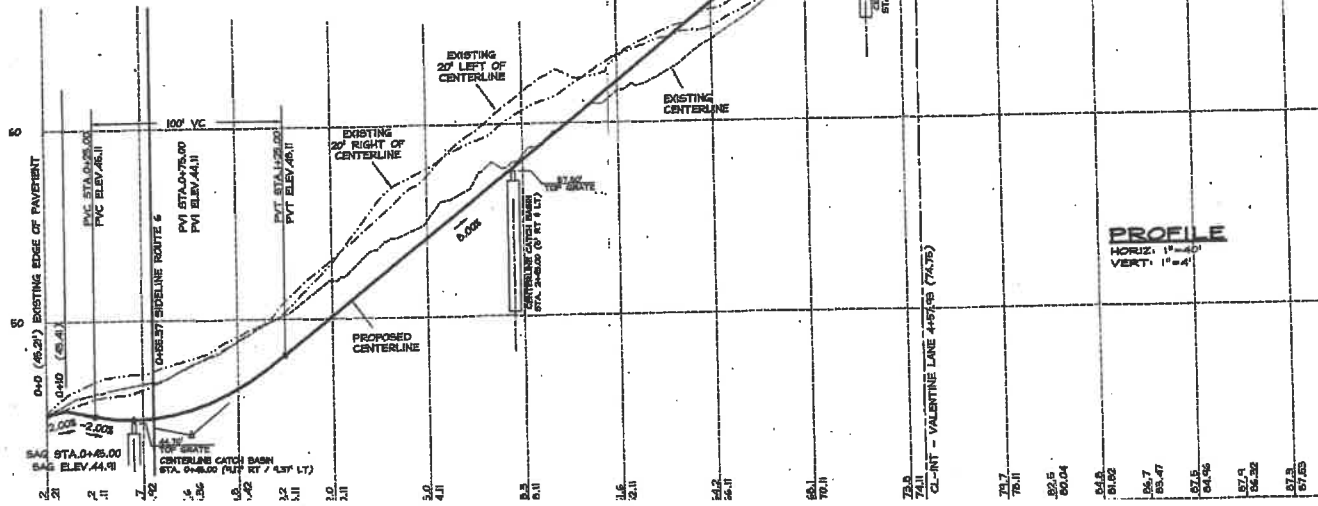
VALENTINE LANE
TYPICAL SECTION
NOT TO SCALE

CATCH BASIN SCHEDULE

BASIN LOCATION	PRE-CAST MODEL	ELEVATIONS
SYSTEM #1 STA: 0+45.00 (WALSH WAY)	(2) SCB-1000-H-20	GRATE: 44.70' (TYP.)
SYSTEM #2 STA: 2+45.00 (WALSH WAY)	(2) SCB-1000-H-20	GRATE: 57.50' (TYP.)
SYSTEM #3 STA: 4+82.00 (WALSH WAY)	(2) SCB-1000-H-20	GRATE: 72.50' (TYP.)
SYSTEM #4 STA: 6+82.00 (WALSH WAY)	(2) SCB-1000-H-20	GRATE: 66.50' (TYP.)
SYSTEM #5 STA: 8+82.00 (WALSH WAY)	(2) SCB-1000-H-20	GRATE: 63.50' (TYP.)
SYSTEM #6 STA: 0+46.86 (VALENTINE LANE)	(2) SCB-1000-H-20	GRATE: 75.50' (TYP.)
SYSTEM #7 STA: 8+22.00 (VALENTINE LANE)	(1) SCB-1000-H-20	GRATE: 67.50'

DRAINAGE LEACH PIT SCHEDULE

PIT LOCATION	PRE-CAST MODEL	PIT EFFECTIVE DEPTH	SURROUNDING STONE
SYSTEM #1 (WALSH WAY)	(2) LCB-1000-H-20	5.0' (TYP.)	3.00' (TYP.)
SYSTEM #2 (WALSH WAY)	(1) LCB-1000-H-20	5.0'	3.00'
SYSTEM #3 (WALSH WAY)	(1) LCB-1000-H-20	5.0'	3.00'
SYSTEM #4 (WALSH WAY)	(1) LCB-1000-H-20	5.0'	3.00'
SYSTEM #5 (WALSH WAY)	(2) LCB-1000-H-20	5.0' (TYP.)	2.00' (TYP.)
SYSTEM #6 (WALSH WAY)	(1) LCB-1000-H-20	5.0'	3.00'



ROAD PLAN & PROFILE
"WALSH WAY & VALENTINE LANE"
TRURO, MA

PREPARED FOR:
**JOHN WALSH, ELLEN SHIEL,
ELIZABETH WALSH CARVER,
MIGUEL D. WALSH, STEPHEN WALSH
& MARY WILLEN WALSH**

SCALE AS NOTED DATE: MAY 24, 2017

EAST CAPE ENGINEERING INC.
CIVIL ENGINEERS
LAND SURVEYORS
44 RT#1 288 ORLEANS, MA.
(508) 235-7120



Timothy J. Brady
TIMOTHY J. BRADY P.E. #1111 DATE: 5/24/17

14+71.82 END OF LAYOUT