



Tighe&Bond

Engineers | Environmental Specialists



TRURO LOCAL COMPREHENSIVE PLAN

Kickoff Meeting – August 30, 2021

Sharon Rooney, AICP, RLA, Principal Planner

PROJECT TEAM

PROJECT MANAGEMENT



Tracy J. Adamski, AICP
Vice President
Project Director



Sharon Rooney, AICP, RLA
Principal Planner
Project Manager



Economic Development
Carole Ridley
Ridley & Associates



Vesna Maneva, RLA
Senior Landscape Architect
Community Engagement



Kristin Dippold
Environmental Planner



Katie Weaver
GIS Analyst II



Arica McCarthy
Planner

KEY PERSONNEL

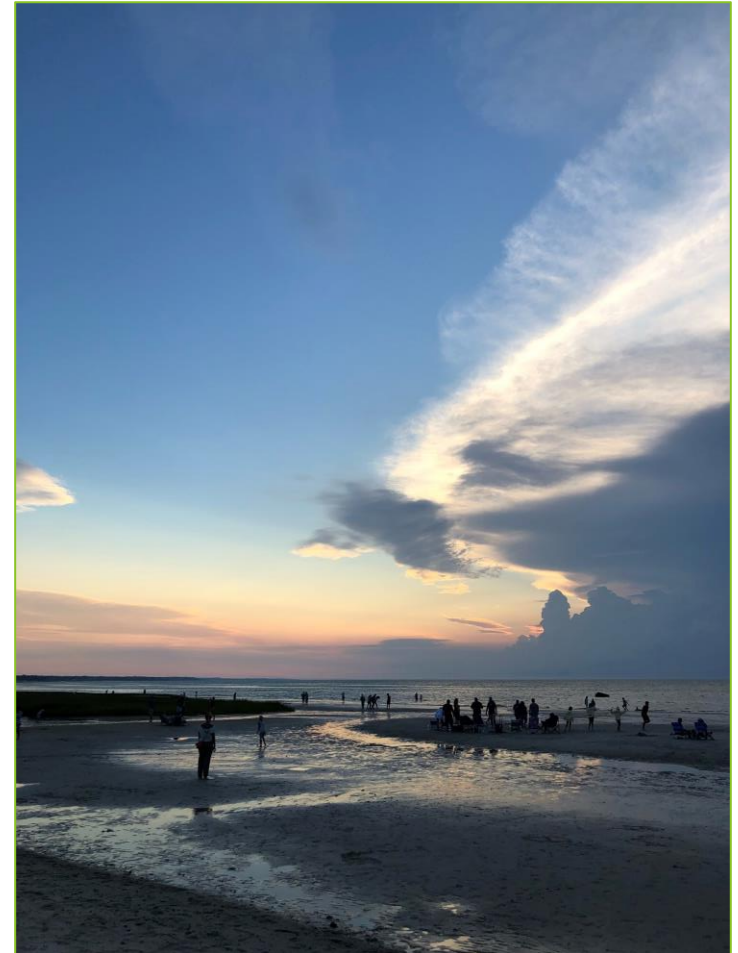
PROJECT GOALS

Phase 1:

- Engage Community and Stakeholders
- Define Vision and Growth Policy
- Develop LCP Goals (including Economic Development)

Phase 2:

- Develop Required LCP Elements
- Prepare Economic Development Plan
- Receive LCP Certification from CCC



REQUIRED CONTENT FOR LCPS

- **Vision Statement & Growth Policy**
- **Existing Conditions Narrative and Data**
- **Key Issues and Needs**
- **LCP Goals**
- **Capital Infrastructure and Facilities Plan**
- **Housing Plan**
- **Targeted Action Plan**

- **(Optional: Performance Measures, buildout analysis)**

PHASE 1: VISION AND GOALS

- **GIS maps of existing conditions**

- Land Use & Zoning
- Open Space
- Historic Resources
- Natural Resources

- **ArcGIS Story Map development**

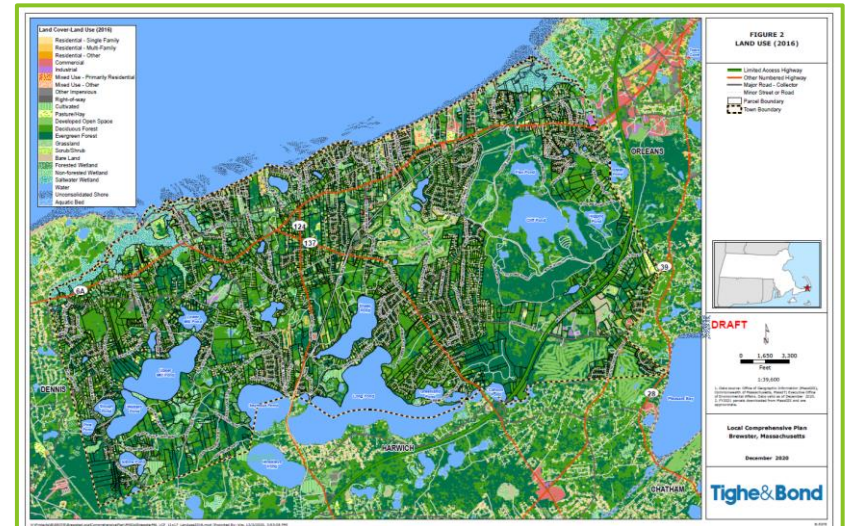
- **Online Survey**

- **Stakeholder/Public Workshops**

- Community Vision
- LCP Goals

- **Economic Development**

- Establish Work Group
- Economic Briefing Statement
- Phone interviews
- Workshop/forum



SCHEDULE

Aug. 2021 – April 2022

April 2022 – Oct. 2022

Vision Statement
/Growth Policy

LCP Goals

Economic
Development
Vision & Goals

LCP Elements

Draft/Final
LCP

Public/Stakeholder Engagement

LCP COMMITTEE ROLE

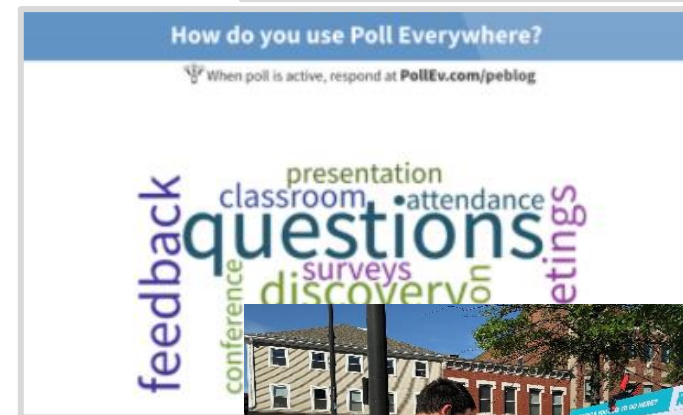
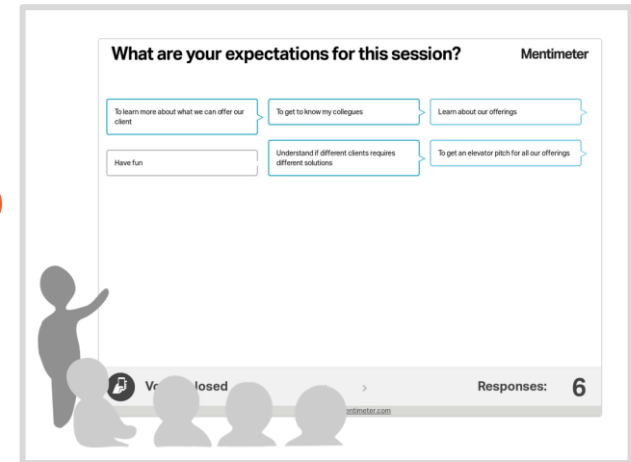
- **Provide oversight/direction for overall LCP effort**
- **Liaison to community at large, other Boards and Committees**
- **Identify Stakeholders**
- **Participate in workshops/outreach efforts**
- **Review and approve draft and final LCP elements**

COMMUNITY AND STAKEHOLDER ENGAGEMENT & INFORMATION-SHARING

- **Formation of Stakeholders Group**
- **Economic Development workgroup**

Engagement Tools:

- **Workshops/Open Houses**
- **Town webpage**
- **Televised meetings**
- **Online survey**
- **ArcGIS Story Map**
- **Posters/Flyers**
- **Pop-Up Events**



ONLINE PUBLIC PARTICIPATION TOOLS: SURVEY 123

- **ArcGIS Online:**

- Web based tool for creating maps/data, analyzing data
- Collaborative/Shareable

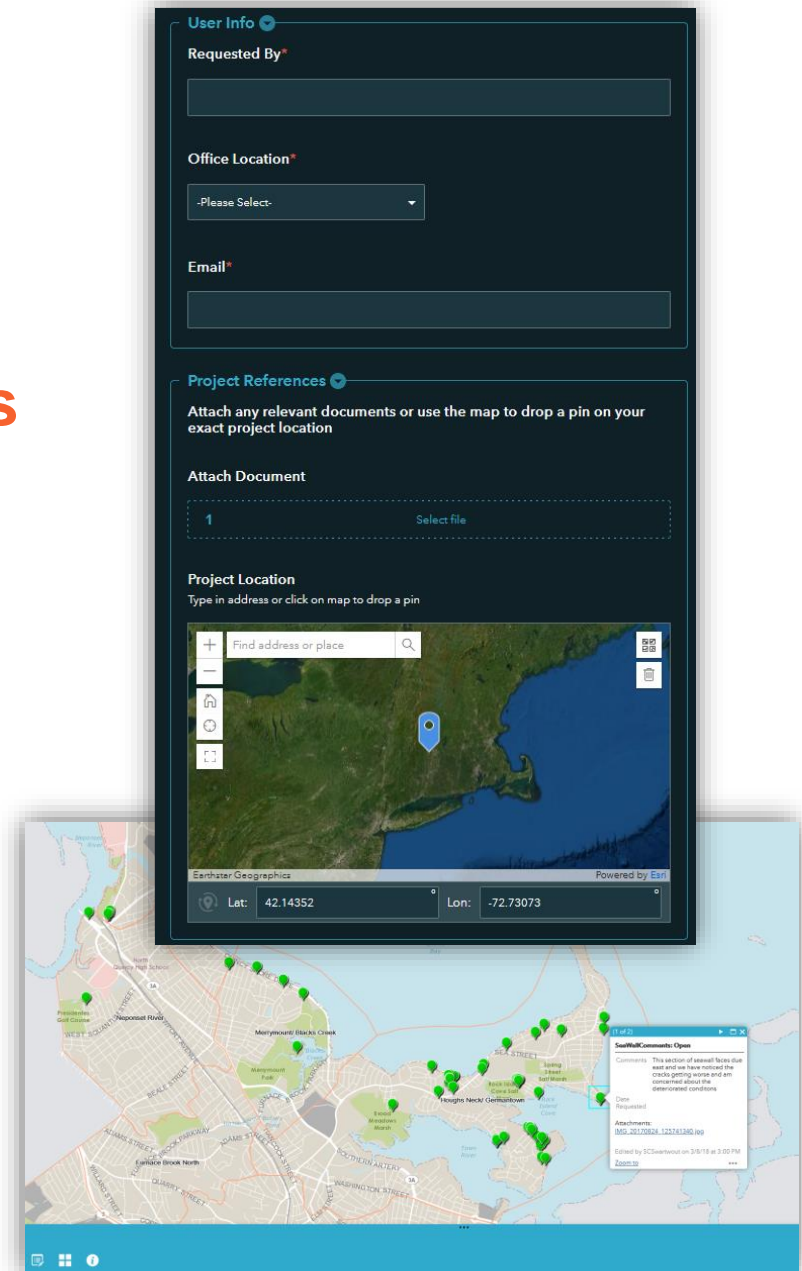
- **Tools:**

- Survey123
- Web Applications
- Dashboard

- **Example Demo**

SURVEY 123

- Online survey tool
- Form/map-based application
- Users can add documents, comments, photos, drop points
- Can see results in real time
- Dashboard can be used to summarize results application (Customizable)
- Export results to table, PDF, summarized in Dashboard
- Public/Private



LINK TO BREWSTER SURVEY 123

- **Photo Survey123:** <https://arcg.is/1GKDHK>
- **Photo Locations Web App Showing Survey123 Results:** <https://tighebond.maps.arcgis.com/apps/webappviewer/index.html?id=a0a7ceb9431649b986b096c5dceb713c>

ARC GIS STORY MAP

- <https://www.capecodcommission.org/our-work/future-of-north-eastham/>



Questions?

TRURO LOCAL COMPREHENSIVE PLAN

Sharon Rooney, AICP, RLA srooney@tighebond.com