



**Town of Truro**  
**SAVE MONEY AND REDUCE TRASH**  
**PAY AS YOU THROW**  
**COMMITTEE REPORT**



**NOVEMBER 2015**



# CAPE COD BAY



# INTRODUCTIONS

## SMART COMMITTEE MEMBERS

Tracey A. Rose, Chair, Board of Health Representative

Bob Weinstein, Board of Selectman Representative

Roberta Lema, Finance Committee Representative

Normand “Tippy” Scherer, Recycling Committee Representative

Axel J. Schmidt, Community member

Tom Cummiskey, Community member

Katherine Black, Secretary, Community member

Rae Ann Palmer, Town Manager

Jay Norton, Dept. of Public Works Director

Pat Pajaron, Health Agent

Resource: David Quinn, Municipal Assistance Coordinator,  
MassDEP/ Barnstable County

# The COMMITTEE'S CHARGE

“To research and report on the feasibility of, and make recommendations for implementing programs to reduce Truro’s solid waste disposal costs—specifically the benefits and drawbacks, if any, of SMART (Save Money and Reduce Trash) also known as PAYT (Pay As You Throw) and Single Stream Recycling Programs. The Committee will also investigate and report on the current operating costs of the transfer station and also investigate associated in-kind technical assistance grants from Massachusetts Department of Environmental Protection.”\*

\*Taken from BOS memo to SMART Committee, dated 10/14/14.

# GOALS AND OBJECTIVES

- TO REDUCE THE TONNAGE OF WASTE THAT IS SENT OFF CAPE TO WASTE PROCESSING CENTERS
- TO ADDRESS THE NEED TO IMPROVE TRURO'S RECYCLING RATE
- IMPLEMENT A FAIR AND EQUITABLE SYSTEM

# CONSIDERED

- Pay As You Throw program
- Single Stream/ Dual Stream Recycling
- Increasing Transfer Station sticker cost
- Impact of commercial trash haulers
- Impact on large and low income families
- Bundling of Trash and Recycling services provided by commercial haulers
- Composting at the Transfer Station
- Community outreach

# PAY AS YOU THROW

“The single most effective tool to reduce waste and increase recycling.

- Equitable— like utilities, you pay for what you use
- Environmental benefits— more recycling, less waste
- Reduces cost in system; savings in avoided disposal costs
- Signals to residents true costs of solid waste
- Enables people to manage the cost of their refuse and provides an incentive to recycle and compost



# PAY AS YOU THROW (PAYT) GREEN WASTE SOLUTIONS

## 2010 EPA STUDY

In a study of 228 New England communities, 113 of which have drop off transfer stations, 68 have PAYT, 45 do not.

PAYT drop off transfer station communities generate **53% less waste per capita** than non PAYT communities.

\* Reference: David Quinn, Regional Waste Reduction Coordinator, Barnstable County

# PAYT IN MASSACHUSETTS

- 143 municipalities out of 351 (40%) currently have a SMART or PAYT program
- 85 are drop-off programs
- 58 are curbside
- Demographically diverse communities
- Majority are “bag programs” (other programs are tags/ stickers, punch cards, weight based or a hybrid)

\* Reference: David Quinn, Regional Waste Reduction Coordinator, Barnstable County

# PROVEN RESULTS

- Trash tonnage decreases 25-50%
- Recycling tonnage increases 10-25%
- 40 of the 50 highest municipal recycling rates are in PAYT communities
- Average recycling rates:
  - PAYT municipalities- 36%
  - Non-PAYT municipalities- 24%

\* Source: MassDEP website

# TOWN OF WELLFLEET

## First Year (Fiscal Year 15) Review of SMART Program

- Transfer Station sticker fees were reduced from \$55 annually to current fee of \$25
- 30% decrease in MSW handled through the Transfer Station compared to previous year
- 24% increase in recyclable materials compared to previous year
- \$27,389 was the savings realized for tipping fees and transportation costs

# TOWN OF SANDWICH

Started PAYT July 2011. Selectmen voted to implement.

## COST AVOIDANCE (Compared to Pre-PAYT)

Year 1: Trash Down 42%      \$129,340

Year 2: Trash Down 50%      \$150,537

Year 3: Trash Down 48%      \$146,034

3 Year Total      \$425,911\*

\* Based on SEMASS Tipping Fees, UCRTS Operations and Mass Coastal Rail Transportation

\* Source: David Quinn, Barnstable County

Other Savings: Town Operational Costs (Equipment, Labor, Transportation)



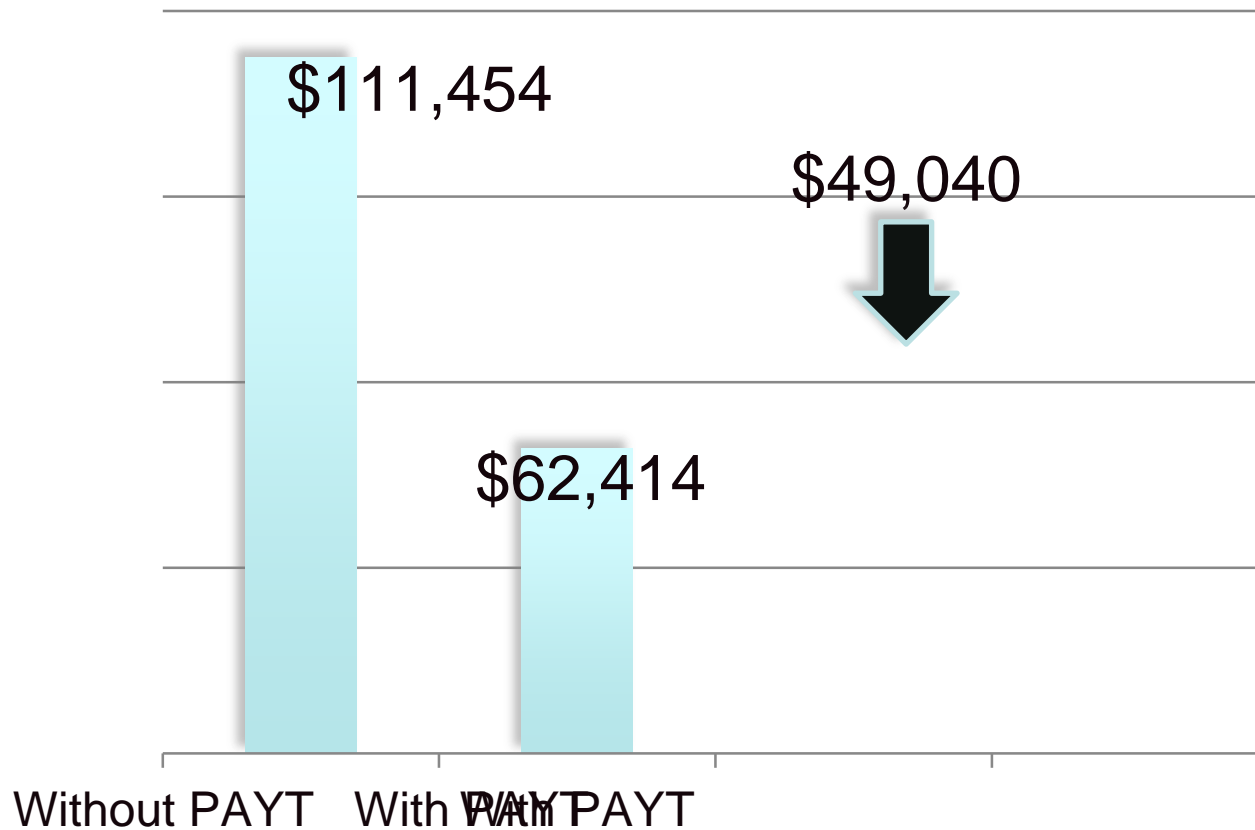
# TOWN of BREWSTER

## First Year Review - PAYT

- Annual transfer station fee reduced from \$110 to \$45.
- 1st 12 months amount of trash disposed of reduced from 2509 tons to 1319 tons, a 47% reduction.
- Total disposal and transportation savings: \$59,838
- Recycling increased 26%; an additional 206 tons.

Fact: Truro would spend far less on waste with pay-as-you-throw

## PROJECTED ANNUAL WASTE DISPOSAL COSTS



Source: Fiscal Year 2014 Town of Truro Annual Report

# TRURO DATA \*\*

FY	MSW TONS	COST PER TON	DISPOSAL COST
FY10	1,443	\$28.45	\$41,050
FY11	1,547	\$29.49	\$45,623
FY12	1,429	\$29.54	\$42,208
FY13	1,550	\$30.35	\$47,048
FY14	1,735	\$31.49	\$54,629
FY15	1,964	\$42.90	\$84,259
FY16*	1,964	\$65.00	\$127,660

\* Estimate

\*\*Prepared by David Quinn, MassDEP/ Barnstable County  
Municipal Assistance Coordinator, see report for further detail

NOTE: Municipal Solid Waste (MSW)

# TRURO OPTIONS

1. Status quo— no change in sticker fee or program:  
Status quo results in the Town absorbing \$73,031 in MSW disposal costs not covered by sticker fees
2. Increase in sticker fee to \$130 per resident per year  
Increase in sticker fees covers increase in MSW disposal costs
3. Implement PAYT  
PAYT implementation reduces resident sticker fee to \$25/ year and with expected 44% reduction in MSW, a balance of \$49,040 is estimated, after paying MSW disposal costs.

# TRURO SMART PRESENTATION

## TRURO TRANSFER STATION

### REVENUE VS. EXPENDITURES

Receipt percentage of direct operating cost

<u>FY</u>	<u>Expenditures</u>	<u>Transfer Station Receipts*</u>	<u>%</u>
2012	\$ 316 K	\$ 154,252	49%
2013	\$ 309 K	\$ 191,370	62%
2014	\$ 342 K	\$ 206,201	60%
2015	\$ 420 K	\$ 199,543	47%
2016	-----	-----	-----



## TRURO SMART PRESENTATION

### Post-Transition Period Projected Revenues

□ Post-transition period projected revenues (July-2016 to June 30, 2017)

REVENUE SOURCE	NUMBER	PRICE	TOTAL
Primary sticker sales	1731	\$ 25.00	\$ 43,275 K
Second sticker sales	1012	\$ 10.00	\$ 10,120 K
33 gallon bags	112,515	\$ 2.00	\$ 192,030 K *
miscellaneous (white goods, tv's, etc.)			\$ 5,000 K
TOTAL REVENUE 7-1-2016 thru 6-30-2017			\$250,000 K

\* Total reduced by estimated 15% administration fee

(scenario B)

33 gallon bags	65000	\$ 2.00	\$ 130,000 K
15 gallon bags	47515	\$ 1.00	\$ 47,515 K
			\$ 151,000 K*

\*Total reduced by estimated 15% administration fee

# SCENARIO USING STANDARD TALL KITCHEN BAGS

Number of \$1 Kitchen Size Bags

Total Annual Costs

HOUSE-HOLD SIZE	ANNUAL STICKER FEE	LOW END 422 LBS PER PERSON	HIGH END 600 LBS PER PERSON	LOW END	HIGH END
1 Person	\$25	32	46	\$57	\$71
2 Person	\$25	65	92	\$90	\$117
3 Person	\$25	97	138	\$122	\$163
4 Person	\$25	130	185	\$155	\$210
5 Person	\$25	162	231	\$187	\$256
6 Person	\$25	195	277	\$220	\$302
7 or more Person	\$25	227	323	\$252	\$348

### Brewster Waste Tonnage

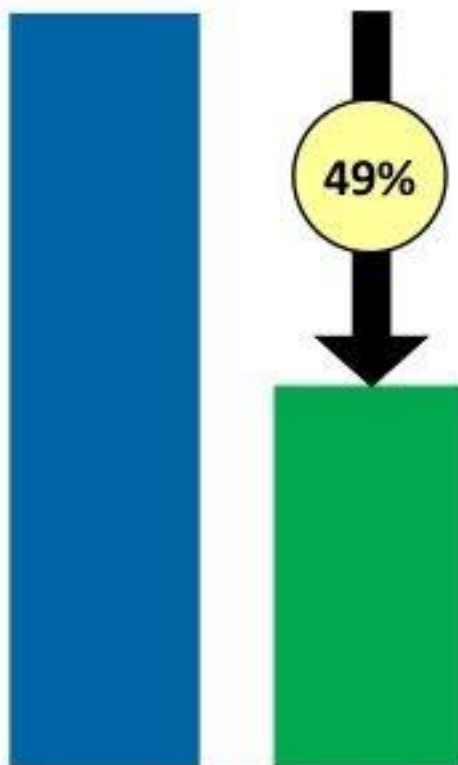


Before  
PAYT

With  
PAYT

*\$44,400 saved  
in nine months*

### Sandwich Waste Tonnage

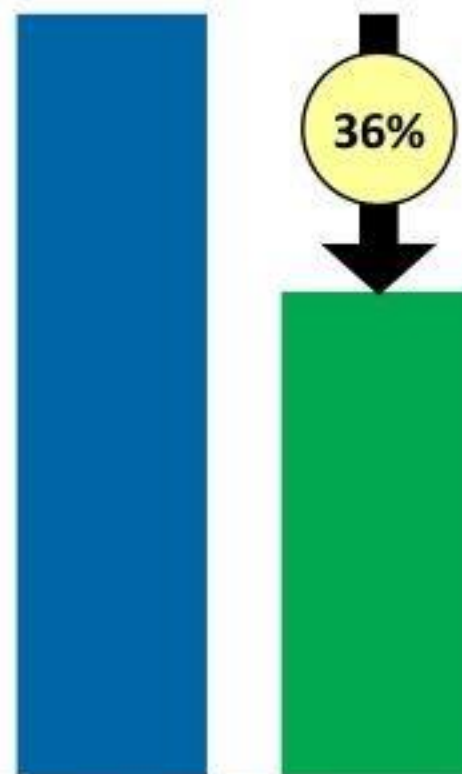


Before  
PAYT

With  
PAYT

*\$594,000 saved  
in four years*

### Wellfleet Waste Tonnage



Before  
PAYT

With  
PAYT

*\$3,000 saved  
in three months*

# RECYCLING SUBCOMMITTEE REPORT

- A review of single stream and dual stream recycling was completed, with dual stream recommended
- Review of revenues and costs for recycling was completed
- Requirement that commercial haulers offer recycling services bundled with trash services
- Composting options to be adopted by the Transfer Station were researched

# PUBLIC OUTREACH SUBCOMMITTEE REPORT

- Provided pamphlets and hand-outs to those attending Truro Town Meeting, April 2015
- Worked with the Provincetown Banner to publish an article in July 2015 which described PAYT and the research being done by the SMART committee
- Information sheets can be provided at the Transfer Station that include tips on recycling and composting
- Information and tips provided for small households
- Options to assist low income families were considered



A Board of Health Regulation/Policy would have to be adopted in order for Truro to be eligible for certain grant monies.

The following is an example only of a proposed regulation/policy...

“All persons and all commercial trash haulers that hold a valid trash haulers business license in the Town of Truro, collecting trash in Truro providing subscription service to households otherwise eligible for the town’s solid waste and recycling program must provide trash and recycling services at one bundled price. Residents subscribing to private waste collection shall not have the option of paying for trash collection service only at a lower price.”

\*State/DEP grant monies are available to towns, provided a policy like this is in place

DOES THE SMART COMMITTEE RECOMMEND  
THE TOWN OF TRURO IMPLEMENT A  
SAVE MONEY AND REDUCE TRASH  
“SMART”PROGRAM?

YES, the committee voted 4 in favor of  
and 3 opposed to recommending this type  
of program to the Board of Selectmen.  
Based on our comprehensive analysis,  
we feel a SMART program would save  
the Town of Truro money.

## **REASONS FOR A YES VOTE**

- Analysis demonstrates savings of \$25,000 to \$75,000 per year in disposal costs.
- Residents have an opportunity to manage their own costs as they pay only for the disposal service they use.
- Recycling increases by 25% or more in towns that have a SMART program.
- Sandwich, Brewster and Wellfleet have these programs already up and running and have realized savings, with statistics to prove it.
- SMART programs are environmentally friendly and in keeping with Truro's "GREEN COMMUNITY" designation.

## **REASONS FOR A NO VOTE**

- Recycling could be increased by more citizen education.
- Transfer Station budget is not out of line, compared to Truro Police Department, Fire Department and School Department.
- Additional revenue from commercial haulers has been realized since August 2015 due to a new scale at the Transfer Station, which could help cover the increase in the tipping fees.
- Because of the new scale, out of town commercial compactor trucks have stopped coming to Truro, reducing MSW.
- Transfer Station should receive all monies to off-set its budget.
- People, taxpayers, older people and visitors just don't want to do this. Truro is small.

## **ADDITIONAL VOTES**

DOES THE TRURO SMART COMMITTEE RECOMMEND TO THE BOS  
THAT THE BOH ADOPT A REGULATION/POLICY REQUIRING THAT THE  
LOCAL COMMERCIAL TRASH HAULERS THAT HOLD A BUSINESS  
LICENSE

WITHIN THE TOWN OF TRURO OFFER BUNDLED SERVICES FOR THEIR  
CUSTOMERS?\*

IN FAVOR-7      OPPOSED-0

SMART COMMITTEE VOTE:   YES

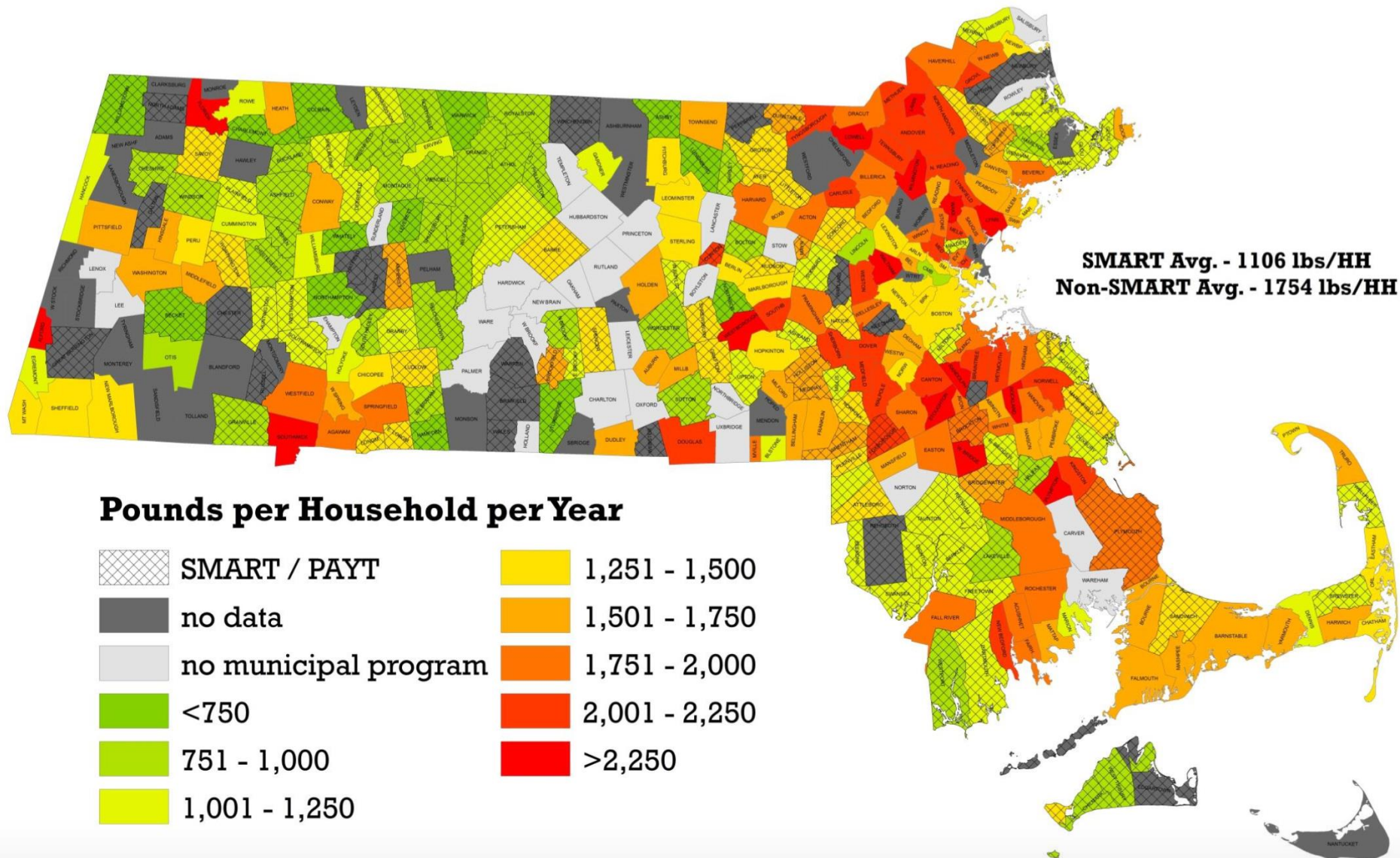
DOES THE TRURO SMART COMMITTEE RECOMMEND ENDORSING  
SINGLE STREAM RECYCLING?

IN FAVOR-0      OPPOSED-7

SMART COMMITTEE VOTE:   NO



# How Much Trash Did We Throw Out in 2013?



Map by David Quinn; Tonnage/HH Data from MassDEP CY2013 Solid Waste and Recycling Survey  
 & DEP Municipal Assistance Coordinators; Massachusetts Municipal Boundaries from MassGIS





**TOWN OF TRURO  
TRANSFER STATION**

**RESIDENT  
#00293**

Expires June 30, 2016

351A23

24